

# DRUMSANDERS

THERE ARE MANY SMALL DETAILS THAT MAKE OUR DRUM SANDERS DIFFERENT FROM OUR COMPETITION, STARTING WITH THE FACT THAT WE HAVE THE EXPERTISE TO TWEAK IT TO YOUR NEEDS.

Give us your sand specs and rain flow requirements and we will tailor the sand rain to your spec, making sure you can adjust the rain flow within a desired range.

Furthermore, we can integrate your sander with automatic sand feeding system so you never run out of sand, thus improving your productivity. We can also offer sand exchange systems, making it easy in your process to switch from one sand type to another. Finally, since most sands used in the investment casting industry create toxic dust, we engineered a dust collection system tested to make sure your workers are safe.

## Standard features

- » Variable speed drive
- » Local start/stop switch
- » Remote start/stop
- » Manual sand feeding

## Optional features

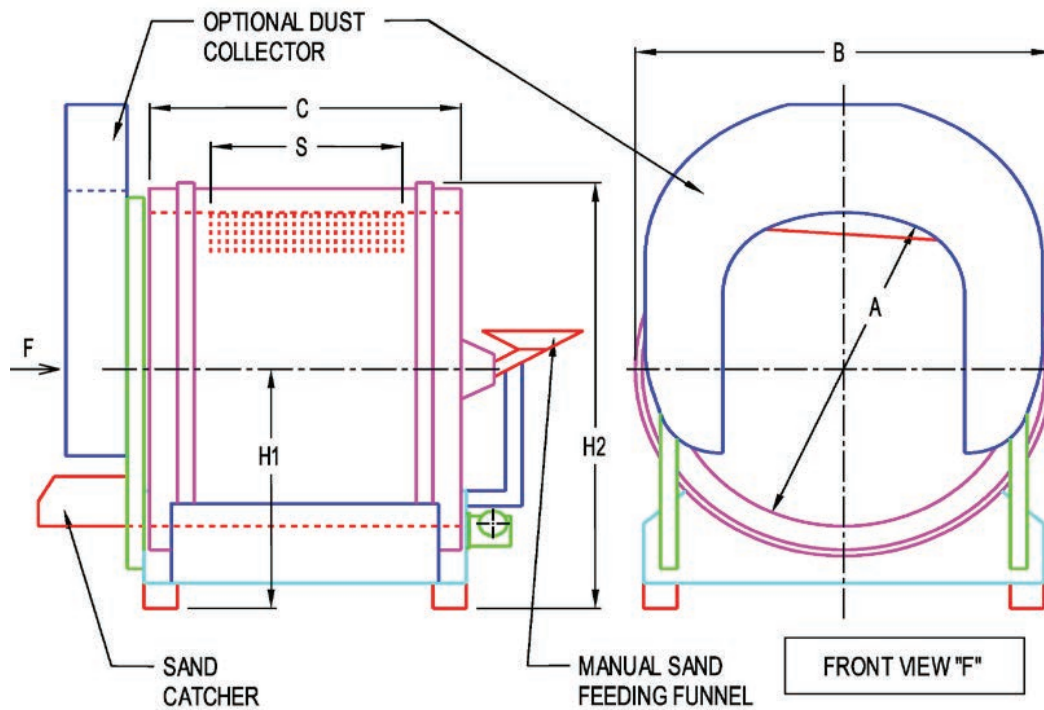
- » Dust collection ring
- » Sand feeding hopper
- » Pneumatic sand feeding
- » Sand weighing system with load cell
- » Rear view window
- » Sand changeover unit  
(use one drumsander with several sands)



Rear view



Drum sander for manual operation



| SIZE<br>INSIDE DIA. A | 48.0" - 1220 MM | 54.0" - 1370 MM  | 63.0" - 1600 MM | 72.0" - 1828 MM  | 83.0" - 2108 MM   |
|-----------------------|-----------------|------------------|-----------------|------------------|-------------------|
| B                     | 64.5" - 1640 mm | 69" - 1750 mm    | 79.5" - 2020 mm | 86.0" - 2185 mm  | 100.75" - 2560 mm |
| S<br>(Sand Rain)      | 36.0" - 915 mm  | 39.0" - 990 mm   | 42.0" - 1067 mm | 50.0" - 1270 mm  | 57.0" - 1450 mm   |
| C                     | 54.0" - 1370 mm | 57.25" - 1455 mm | 60.5" - 1540 mm | 71.5" - 1815 mm  | 88.0" - 2185 mm   |
| H1<br>(Minimum)       | 39.5" - 1005 mm | 41.0" - 1040 mm  | 45.0" - 1143 mm | 46.75" - 1190 mm | 51.25" - 1302 mm  |
| H2<br>(Minimum)       | 71.5" - 1815 mm | 75.5" - 1920 mm  | 85.0" - 2160 mm | 91.0" - 2315 mm  | 101.5" - 2580 mm  |